

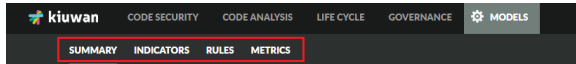
Basic Model Management

This guide will show you how to manage the models in Kiuwan.

- [Models Management toolbar](#)
- [Selecting the model to use](#)
- [Creating a model](#)
- [Verifying the current model](#)
- [Setting the default model for new applications](#)
 - [How to see which model is the default model](#)

Models Management toolbar

The toolbar menu in **Models Management** displays the following information and options:



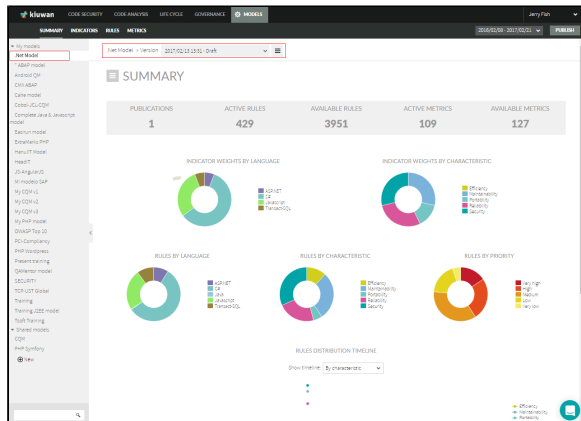
Clicking the links to navigate through these sections.

Selecting the model to use

When entering Model Management, Kiuwan's **CQM model** is automatically selected and the **Summary** section for its latest publication appears.

(CQM is one of the models that Kiuwan provides. Read more on this topic in the [Models and CQM](#) section .)

The drop-down menu to the left shows the current model you are working with and its latest modification date and time.



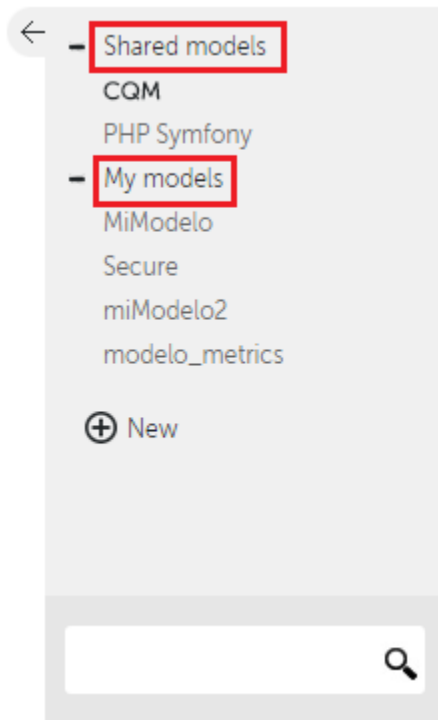
You can access the following types of models:

- **Shared models:** provided by Kiuwan
- **My models:** created by the user

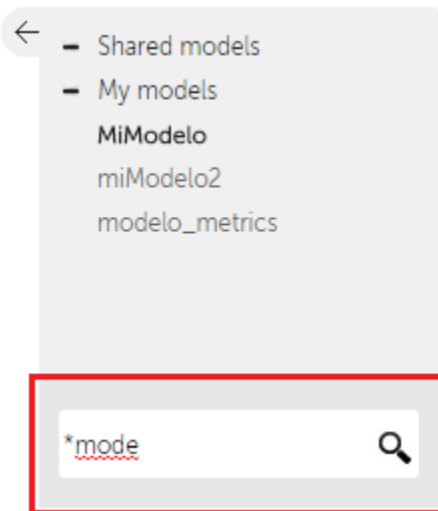
To select a model, use the gray left panel, where the models are listed. This section can be collapsed or expanded clicking the arrow on its top left corner.

When a model name is clicked, the current section will be updated to load and show the model information.

By default, when a model is selected, the latest accessible version will be loaded (the last publication if the model is shared, the current version of the model belongs to the current user).



It is also possible to look for a model using the model name filter on the bottom of the left panel. Only models that match the pattern appear in the panel.



Creating a model

Users with enough privileges can create new models. To do so, click the **+ New** button in the panel on the left:



New models can be created from scratch or can be copied from other existing models. These and other operations with models are detailed in [Advanced Model Management](#).

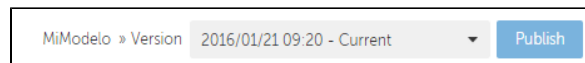
To analyze applications with your own models, you must first publish the models you want to use. Once the models have been published, they can be assigned in the [Applications management](#) section.

Verifying the current model

The top-right drop-down menu shows the current model version. This box details the last time the model was modified, along with a tag of the current version.

The name of the model is shown on the top right title, under the Models Management toolbar.

You can access previous versions by selecting other available items in the drop-down menu.



Setting the default model for new applications

By default, CQM is the **default** model assigned to a new application. You can change the model assigned to an application at any time (see [Applications management - Update an application](#) for help on how to do it).

But if you want to set a specific model, a shared one or one of your custom models, as the default model for new applications you can do it as follows:

1. Go to **Model Management** ([Models Manager User Guide](#))
2. **Select the model** you want to be the default model in the model selector.
3. Expand the hamburger menu and click **Set as default model**.

Now the selected model will be the default model assigned to new applications.

How to see which model is the default model

The Model selector menu on the left indicates with an asterisk the default model.

