

# Activity

This page explains the **Activity** section in Kiuwan Governance.

**Contents:**

- Applications
  - Application Activity
  - Activity of Applications Grouped By Portfolio
- Deliveries

The activity page displays the applications' activity data. On this page, you can control and manage the activity of all your software providers, development teams, different applications technologies, etc.

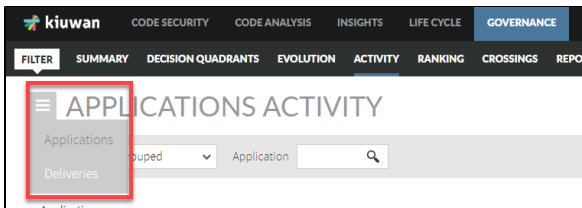
You can filter the activity by any of the groups of portfolios you have in your account. Select a time period you can access all the information for that period: lines of code analyzed, risks, global indicators, effort to target...

The information displayed indicates the variation of that item within the selected period.

This page organizes information in two basic views:

- **Applications** (information related to changes in metrics and indexes)
- **Deliveries** (information related to applications life cycle)

Both views allow displaying application activity grouped by portfolios. To access these sections, open the drop-down menu on the left of the main page title.



## Applications

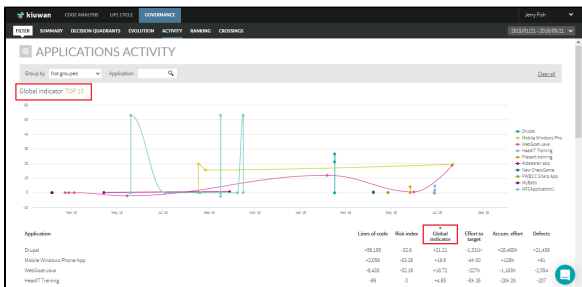
### Application Activity

Application Activity page allows viewing changes of applications (activity) on a selected metric or indicator during a certain time period. Changes in activity can be viewed for a specific application or for those applications that belong to a selected portfolio.

The application panel shows changes in the following metrics/indicators:

- Lines of code
- Risk index
- Global indicator
- Effort to target (as defined in the model of the application)
- Accumulated effort
- Number of Defects

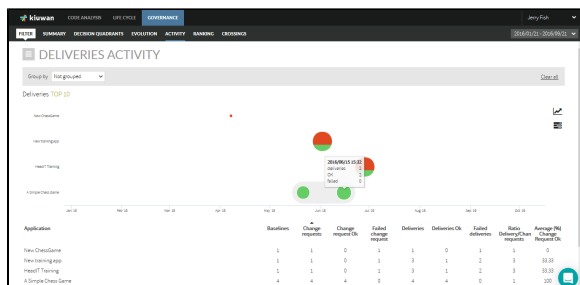
As an example, the below image shows changes in the Global Indicator during the specified time range.



While the **Evolution** page shows the absolute values of the metric, the Activity page shows the variation of the metric value since the beginning of the selected period.

For better understanding, the following table shows an example :





If not grouped, the displayed data will refer to the applications.

The **Group by** menu allows to group applications by the selected portfolio group, so data will be presented for portfolio values.

In the Deliveries graphic, there are two kinds of icons:

- A square: a single Delivery analysis
- A circle: a grouping of Deliveries



The graphic will present a circle when there are deliveries very close in time according to the time scale of the graphic.

Click on a circle to open a new diagram that shows the deliveries included in the group (zoom-in).

If the inner diagram still shows circles, you can zoom-in recursively. To return to the previous view, click on the lens icon (top-right side of the graphic).

In the case of a group (a circle), the size of the icon is proportional to the number of deliveries.

The color of the icon is green or red depending on the audit results of the deliveries, being green if OK and red if Failed. As a circle is a group of deliveries, a mix of green and red indicates that in that group there are deliveries OK and Failed.

Hover the mouse over the icon to show details on that delivery/group.

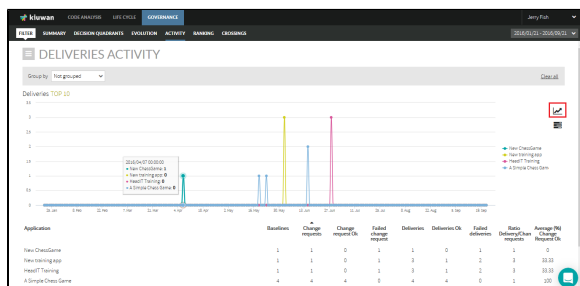
For a delivery (square) it will show:

- date of the delivery analysis
- the label of the baseline
- score and number of files of the delivery

For a group (circle) it will show:

- total number of deliveries
- number of deliveries OK
- number of deliveries FAIL

Click the corresponding icon to switch to a line graph where the total number of deliveries is displayed for every application on a timely basis.



## Tabular List

Within the selected period, a list displays the following information for every application:

- Baselines: Number of baselines analyzed
- Change Requests: Number of change requests analyzed

- Change Requests OK: Number of change requests whose last analysis was OK, i.e. the audit result was OK
- Failed change request: Number of change requests whose last analysis was failed, i.e. the audit results were FAIL
- Deliveries: Total number of deliveries
- Deliveries OK: Total number of deliveries whose Audit was OK.
- Failed deliveries: Total number of deliveries whose Audit was FAIL.
- Ratio Delivery/Change Requests: Average of deliveries by the change request
- Average (%) Change Request OK: Average percentage of change requests that were OK.